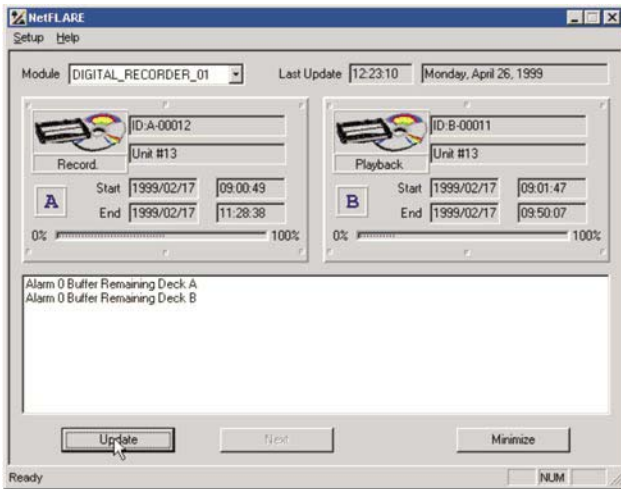


NetFLARE™

Recorder Status & Alarm Notification System

Reliable performance is synonymous with our full line of digital voice recorders. Our exacting design standards, stringent testing and ISO 9001:2000 Certification serves to ensure trouble free operation. Yet in those rare occurrences when a malfunction occurs, **NetFLARE™** is your trusted network messenger, polling the recorder at regular intervals to confirm system integrity and keeping you informed of recorder status, prompting corrective action when required.

NetFLARE™ Status Screen



Alarm Notification Prompt



Windows® Compatible

Multi-Recorder
Monitoring & Access

Single Recorder
Multiple Recorders

Multi-User, Simultaneous
Notification

Visual and Audible
Alarms

Status Inquiry Screen

Recorder Module
Last Requested Update
Media Deck Mode
Media Name
Media Start/End Time
Media Capacity
Current Open Alarms

Alarm Notification

Media Capacity
Hard Disc Buffer
Media Fault
Losing Audio
Inactive Channel
Invalid Password
Loss of Power
Network Problem

NetFLARE™



Recorder Status & Alarm Notification System

NetFLARE™ eliminates the problems associated with undetected recorder alarm conditions. Acting as your electronic watchdog, **NetFLARE™** continuously monitors and reports recorder alarm conditions and displays system status functions.

NetFLARE™ is offered as a freestanding application which can be installed on multiple PC's residing on a network with DI's Digital Voice Recorders and Call Check Systems.

NetFLARE™ responds to an alarm condition by posting an alarm notification on the remote PC monitor describing the malfunction and simultaneously sounding an audible alarm.

NetFLARE™ will continue to re-post the original alarm until the condition is resolved at the recorder.

System status can be obtained in a fraction of the time it would take to walk to a recorder.

NetFLARE™ also advises you of:

- The status for each media drive
- The archive media ID
- The start and end date/time for each installed archive media
- The remaining archive capacity for each optical disc or DAT tape
- Loss of power to the recorder
- Loss of network connectivity

NetFLARE™ ...

*Providing you information:
where you need it — when you need it!*

NetFLARE™ Specifications*

Operating System	Microsoft Windows® 2000 Professional or XP Professional
PC Type	Multi-Media Classification
CPU	Pentium® 400 MHz or higher
Hard Disc Space	20 MB
RAM Memory	256 MB
Monitor	SVGA - Configured for 800x600 resolution or better - 16 bit color "thousands of colors" or better
Sound Card	SoundBlaster™ compatible
Speakers	Shielded Computer Speakers
Floppy Drive	3.5", 1.44 MB drive
Network Card	Ethernet - 10 MB/sec or better
Network Configuration	Peer to Peer - TCP/IP
Alarms Announced	<ul style="list-style-type: none">• Media Capacity• Media Fault• Invalid Password• Loss of Power• Hard Disc Buffer• Inactive Channel• Losing Recordings• Network Problems

All other alarms passed from the recorder application software (WatchDOG). **

Recorder Requirements Compatible with all DI Reliant™ and DI VoiceVault™ recorders

* Specifications subject to change without notice.

** Power loss or critical alarms are announced through a recorder contact closure connector to enable notification through an outbound dialer or other external alarm devices (WatchDOG).

Windows® is a registered trademark of Microsoft®, Pentium is a registered trademark of Intel.

